



HEDINGHAM SCHOOL AND SIXTH FORM



PROSPECTUS 2023

# Welcome to Hedingham School



Hedingham School provides a high quality educational experience for all students and strives to ensure that each individual's academic and personal development is fulfilled.

We offer a vibrant learning environment where students are encouraged to 'think' and explore strategies to grasp and apply knowledge.

The curriculum offered is purposeful and stimulating, allowing students to build a range of skills as they progress through school.

We want our students to be resilient and take on the challenges of the 21st century. We encourage them to approach school with confidence and participate fully in all aspects of school life. At Hedingham, our students support and care for each other and display high levels of respect for all members of the community. Hedingham School has a strong 'culture' which actively promotes equality of opportunity, allowing all students to pursue their ambitions.

We believe in building strong partnerships with parents, based on trust and confidence.

This prospectus is designed to let you explore the type of school we are. Please see our website for further information.

**Andrew Harvison**  
Headteacher

## MISSION STATEMENT

**'Hedingham School seeks to create a challenging and stimulating learning environment that encourages high expectations for all learners. Students are prepared for life in the 21<sup>st</sup> century through a safe, caring and supportive environment. We strive to foster positive relationships with students and staff, offering mutual respect for all members of the community.'**

## OUR SCHOOL MOTTO IS:

**READY RESPECT SAFE**

## VISION

**This vision is driven through our school curriculum. Our aim is to ensure that the curriculum delivers the following principles:**

**To provide the knowledge and skills required to be successful learners**

**To create resilient and independent learners who are able to meet the challenges of the 21<sup>st</sup> century**

**To prepare learners for the next step in their education**

**To broaden their horizons through a rich and varied enrichment programme**

**To encourage learners to be active citizens who contribute positively to the community**



# Expectations

Our behaviour expectations form part of our school motto,

**READY RESPECT SAFE**

They underpin our school mission and in turn, teaching and learning within the school.

## CHARACTER



*Am I ready for the 21st Century World?*

All student should develop the characteristics of leadership, organisation, resilience, initiative and communication in preparation for their 21st Century World



*How do I celebrate difference & diversity?*

All students should respect everyone regardless of race, religion, sexuality, gender or disability

All students should be kind to everyone in the language they use

All students should positively contribute to their school and wider community



*How do I look after myself and others?*

All students should learn how to identify and manage risk

All students should be kind and positive digital citizens

All students should look after their health and well-being



Be on time  
Be equipped to learn  
Be alert and ready to learn



Ensure that you do not disrupt the learning of others  
Keep your phones and headphones out of sight in lessons  
Be polite and listen to staff and peers



Use equipment appropriately without causing damage  
Remain seated unless given permission to leave your seat  
Follow all teacher instructions without question

# Teaching and Learning

Teaching and Learning is our core business. It sits at the very heart of Hedingham School and we continually strive to provide an environment in the classroom that encourages our learners to flourish and grow. We provide challenge, spark curiosity, as well as build important knowledge and skills.

*In our lessons, students are encouraged to:*

## THINK:

through developing a strong understanding of the building blocks of each subject rather than to be merely able to recall information

## USE SPECIALIST TOOLS:

by providing the capacity to harness subject specialist equipment as well as the ability to utilize new and emerging technologies

## WORK IN DIFFERENT WAYS:

by working on independent and group tasks. Our students build confidence by articulating thoughts and opinions in a wide variety of settings

Staff at Hedingham school have an unwavering commitment to professional development and continually explore new strategies to improve learning and progress in the classroom. We work to centralised classroom principles which outline what we constitute as features of consistently high quality lessons.

*Diagram showing Centralised Principles*



# Whole School Curriculum Aim

Our curriculum is exciting, broad and balanced. It is designed to inspire young people, generate enthusiasm and develop valuable knowledge and skills. The curriculum aims to meet the individual needs of each student to ensure that they make exceptional progress during their time here.

**Our aim is to provide challenges and successes for all by offering diverse opportunities in and out of the classroom. Our curriculum is structured to ensure that each individual's academic and personal development is fulfilled.**

**We offer a vibrant learning environment where students are encouraged to 'think' and explore strategies to grasp and apply knowledge. Our curriculum is carefully sequenced to ensure that students' understanding of key knowledge, skills and concepts are built over their time at Hedingham.**

*" I like that we have to walk to every classroom instead of sitting down in the same classroom for every lesson"*  
Darcy, Year 7

All subject areas carefully design a curriculum to shape a seamless learning experience between years and key stages. Subject curriculums are sequential and allow for revisiting and reinforcement so to ensure students learning is consolidated and progresses rapidly. Details of KS3 subject curriculum "maps" are available on the school website.



# Curriculum

## Key Stage 3 Curriculum:

English  
Mathematics  
Science  
History  
Geography  
French\*  
Dance  
Religion, Values and Ethics

Design & Technology  
Art  
Music  
Drama  
PE  
Computer Science  
Personal Development

*\*All students study French as a single language option*



## Key Stage 4 Curriculum:

### Compulsory Subjects:

English (*Language and Literature*)  
Mathematics  
Science (*Combined or Triple*)  
PE/Dance  
Personal Development



*Left: Jessica Harlow  
Year 7 Artwork*

*Below: Olivia Savage  
Year 9 Artwork*

### Subject Options:

Art  
Computer Science  
Music  
Media Studies  
French  
Philosophy & Ethics  
History

Business Studies  
Child Development  
Drama  
Geography  
Design & Technology  
Food Preparation & Nutrition





# Student Support Centre

The Student Support Centre (SSC) is at the heart of Heddingham School's pastoral support. Open throughout the day, it is where our Year Leaders, Pastoral Support Officers, SENCo and two of our Assistant Headteachers are based.

The SSC is there to listen, nurture and support our students in all aspects of their life. Students can report any concerns either in person at the SSC, through an email address

[safe@heddingham.essex.sch.uk](mailto:safe@heddingham.essex.sch.uk)

or through our 'Orange Card' boxes. They are like worry boxes and are situated around the school. This ensures each student has every possible avenue to communicate their worries.

The SSC takes a lead on many aspects of school life including the Student Parliament and Year Group Council, Anti-Bullying Week, Black History month and DEAR (*Drop Everything and Read*).

In addition to this, Heddingham School has a whole school mental health framework to help students recognise, show and regulate emotions. It is called

'Mood Scales.' Mood Scales help students identify their emotions and give a language to how the young person is feeling. In turn, these help us identify who needs support.

The Year 6 and 7 transition programme is led by our Student Support Team. We plan and deliver numerous activities to support what we know will be a huge step for young people in their education. These include activities such as The Wall of Worry and The Garden of Hope, which explore and discuss common worries about starting secondary school. When students start school in September, they are guided from class to class by a Teaching Assistant and have a designated area to meet friends at break and lunch. In addition to this, students take part in a tutor programme called 'The Keys to Heddingham School' which supports our new Year 7's on how to manage secondary school life.

Whatever the worry, whatever the celebration, the SSC and indeed all staff are here to support each student's journey through Heddingham School.





## The Extended Curriculum

Our broad and balanced curriculum is not limited by the walls of our classrooms and is enhanced through all aspects of school life including:

**Assemblies**

**Leadership opportunities**

**Trips and Visits**

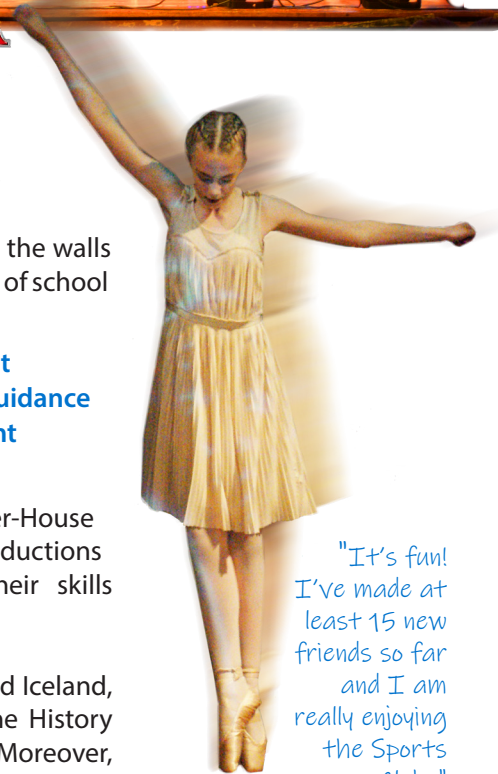
**Clubs and enrichment**

**Careers advice and guidance**

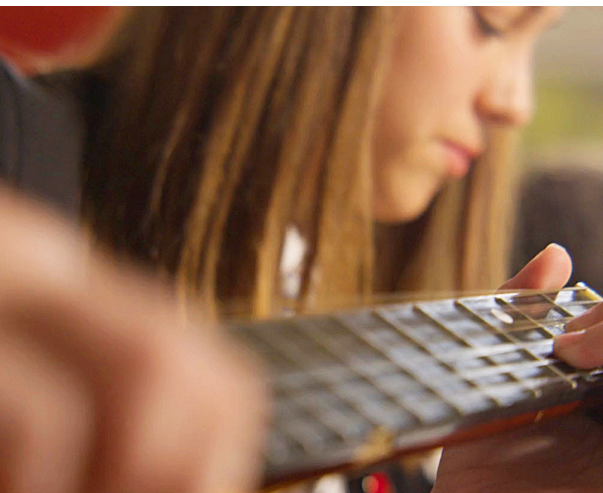
**Personal development and focus days**

In addition to this, annual events such as the Inter-House Arts Festival, Music concerts and Drama productions are opportunities for each student to extend their skills and interests.

In previous years, the Science department have visited Iceland, Media Studies have ventured to New York whilst the History Department have taken students to Belgium. Moreover, numerous sporting fixtures take place throughout the year. A ski trip and a water sports holiday are now annual events.



"It's fun!  
I've made at  
least 15 new  
friends so far  
and I am  
really enjoying  
the Sports  
Clubs"  
Toby, Year 7





# Personal Development

Students are provided with a programme of Personal Development which focuses on the skills to address 21<sup>st</sup> century life. This incorporates Careers Education, E-Safety, Healthy Relationships and educating students on how to identify and manage risk as well as safeguard themselves and each other.



*"I really enjoy the Clubs, there are so many to choose from. Teachers make the lessons really interesting"*  
Kaiden, Year 7

# Special Educational Needs & Disabilities

Hedingham School's culture is built around high quality teaching and learning with an inclusive approach to students with Special Educational Needs and Disabilities (SEND) ensuring the vision is the same for all students, whatever their ability or need. Adaptive learning and targeted support ensures that our students make good progress as well as developing independent learning skills.

The SENCO, Mrs Susan Goodwin, in collaboration with the Headteacher and Governing Body, play a key role in determining the strategic development of the SEND policy and provision in the school in order to raise the achievement of children with SEND.



# Recognising Success

At Hedingham School, we believe 'success breeds success.' As such, every half term, each year group has a Celebration Assembly. Subject Stars are awarded for their efforts in lessons and achievements beyond the classroom.



Students are recognised for their best possible attendance as there is a direct link between regular attendance at school and a child fulfilling their potential. At Hedingham, we operate a House system and each student and their form group will be attached to one of four school Houses. Students can collect House points during the year, both in the classroom and in a host of extra-curricular activities. All Houses compete for the annual 'House Shield', which is presented at the end of the year.



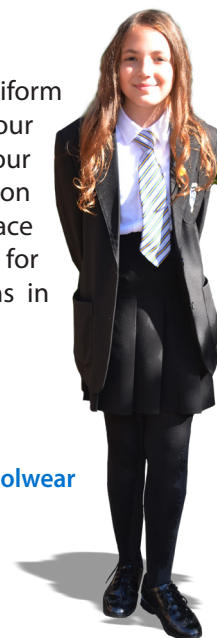
## Uniform



We believe that wearing the Hedingham uniform with pride helps students to feel part of our community. It sets a standard which supports our expectations of work and behaviour. In addition to this, dressing appropriately for the work place puts students in the right frame of mind for learning and prepares them for expectations in their future world of work.

**Uniform is available from  
Baldwins of Halstead, Essex,  
Telephone: 01787 472079**

[www.baldwins-departmentstores.com/hedingham-schoolwear](http://www.baldwins-departmentstores.com/hedingham-schoolwear)



*For further information on Safeguarding,  
Special Educational Needs & Disabilities  
Uniform and Attendance, please see our website*



## Our Facilities

We strive to continue to improve and develop our facilities and provide maximum access for our students. We are fortunate to be in a position to offer specialist facilities that enable us to provide a broad and exciting curriculum.

*Distinctive Features of Our School Include:*

**Our own Sports Hall exclusively for the use of our students**

**Purpose Built Dance Studio**

**4G All Weather pitch**

**Drama Studio**

**Learning Centre equipped with a school library**

**Music Rooms with practice rooms attached**

**Designated Sixth Form Area**

**Vocational Centre**

**Media Suite**

**Multiple IT spaces available for independent and subject use**

**Specialist Art rooms, Science Labs and D&T rooms**

**Student Support Centre with a reception area**

**Brand new T-Level classrooms**





# Admissions Policy

The published admission number for students in September 2023 is 196. Places will be allocated using the following criteria in the following order.

- 1 Looked After Children<sup>1</sup>**
- 2 Children living in the priority admission area<sup>3</sup> with a sibling<sup>2</sup> attending the school**
- 3 Other children living in the priority admission area<sup>3</sup>**
- 4 Children living outside the priority admission area<sup>3</sup> with a sibling<sup>2</sup> attending the school**
- 5 Remaining applications**

In the event of oversubscription within any of the above criteria, priority will be determined by straight line distance from home to school, those living closest being given highest priority.

<sup>1</sup> A looked after child or previously looked after child is as defined in the *School Admissions Code 2012*.

<sup>2</sup> A sibling is defined as a child who has a brother, sister, stepbrother or stepsister living in the same family unit in the same family household and address as a child who attends the preferred school in any year group excluding the final year (Year 13). Biological siblings who attend the preferred school in any year group excluding the final year will also be treated as siblings irrespective of place of residence. Children residing in the same household as part of an extended family, such as cousins, will not be treated as siblings.

<sup>3</sup> The priority admission area has no relevance to eligibility for home to school transport. Details of Essex County Council Transport Policy are available on the ECC website.

Please refer to the Secondary Education booklet available on the website [essex.gov.uk/admissions](https://www.essex.gov.uk/admissions) for further details on distance calculation, if required.



## **Years 8 – 11**

For mid year applications, a mid year application form needs to be completed and returned directly to the School. A copy of the application form can be requested from:

**The Headteacher  
Hedingham School and Sixth Form  
Yeldham Road  
Sible Hedingham  
Essex  
CO9 3QH  
01787 460470**

Alternatively a form can be downloaded from the school's website. Full details of the mid year application process are provided on the website and in guidance with the mid year application form.

An application for admission to these year groups will be refused if the intended year group of the applicant has already reached the published admission number.

Parents/Carers will be asked if they would like their child's name to be added to a waiting list.

In the event that places become available, applicants will be admitted according to the over subscription criteria.

The waiting lists for the Years 7-11 will be dissolved at the end of each academic year.

Children with Education, Health and Care Plans that name a school in the statement are required to be admitted to the school that is named.

## **Admissions to Sixth Form**

The school is proposing to admit 125 students each year to the Hedingham School Sixth Form, including external applicants. Admission to the Sixth Form will be by reference to qualification to a particular Sixth Form programme of study. The Sixth Form prospectus will publicise the range of programmes, the specific entrance requirements. In the event of oversubscription priority will be determined by straight line distance from home to school, those living closest being given highest priority.

**Right of Appeal** - Parents have the right of appeal against any refusals of a place, Year 7 or Mid Year. Information on how to appeal is available on the website [essex.gov.uk/admissions](https://www.essex.gov.uk/admissions)

# General Information

Headteacher: **Mr Andrew Harvison**  
Deputy Headteacher: **Mr Paul Finch**  
Assistant Headteacher,  
Student Care & Welfare: **Mr David Nash**  
Chair of Governors: **Mrs Sarah Ford**  
Vice Chair of Governors: **Mr Martin Lee**

## The School Day

Registration/ Personal Development	8.40am
Period 1	9.10am
Period 2	10.10am
<i>Break</i>	<i>11.10am</i>
Period 3	11.30 am
Period 4	12.30pm
<i>Lunch</i>	<i>1.30pm</i>
Period 5	2.15 pm
Finish	3.15 pm

## Term Dates 2023-2024

Autumn Term starts:	1 September 2023
<i>Half Term holiday:</i>	<i>23 - 27 October 2023</i>
Autumn Term ends:	20 December 2023
Spring Term starts:	4 January 2024
<i>Half Term holiday:</i>	<i>19 - 23 February 2024</i>
Spring Term ends:	28 March 2024
Summer Term starts:	15 April 2024
<i>Half Term holiday:</i>	<i>27 - 31 May 2024</i>
Summer Term ends:	23 July 2024





[hedingham.essex.sch.uk](http://hedingham.essex.sch.uk)